

Data sheet
SYN 169 s

Article number: 1690801

Time and light control
Analogue time switches

SYN 169 s

Article number: 1690801

Description



- Analogue time switch
- 1 channel
- Without power reserve
- Synchronised with mains
- Daily program
- 96 switching segments
- Shortest switching time: 15 minutes
- Clock hands for time display
- Switching preselection
- Permanent ON/OFF switch
- Switching status display
- Simple summer/winter time correction
 - Time can be changed clockwise or anti-clockwise

Technical data

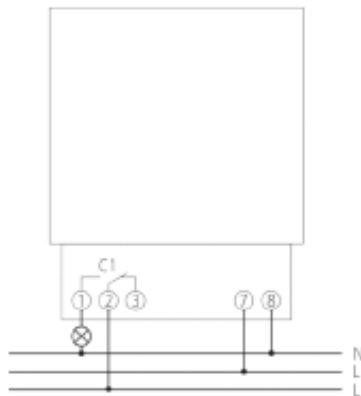
Operating voltage	230 V AC
Frequency	50 Hz
Number of channels	1
Installation type	Front panel installation/wall installation
Type of connection	Screw terminals
Drive	Synchronous motor
Program	Daily program
Switching capacity at 250 V AC, $\cos \varphi = 1$	10 A
Switching capacity at 250 V AC, $\cos \varphi = 0,8$	2 A
Shortest switching times	15 min
Programmable every	15 min
Time accuracy at 25 °C	Synchronised with mains
Type of contact	Changeover contact
Switching output	Potential-free and phase-independent
Number of switching segments	96
Stand-by consumption	0,9 W
Test approval	EMV
Housing and insulation material	High-temperature resistant, self-extinguishing thermoplastic
Type of protection	IP 20
Protection class	II according to EN 60 730-1
Ambient temperature	-10 °C ... +55 °C

Data sheet
SYN 169 s

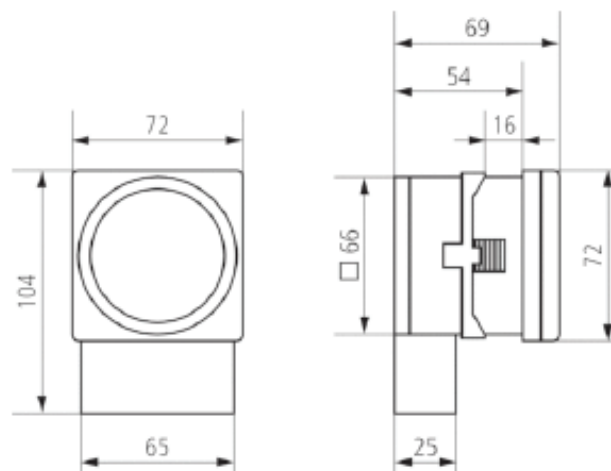
Article number: 1890801

Time and light control
Analogue time switches

Connection example



Scale drawings



Accessories

Snap-on mounting 72 x 72

- Article number: 9070071
- Details ▶ www.theben.de

